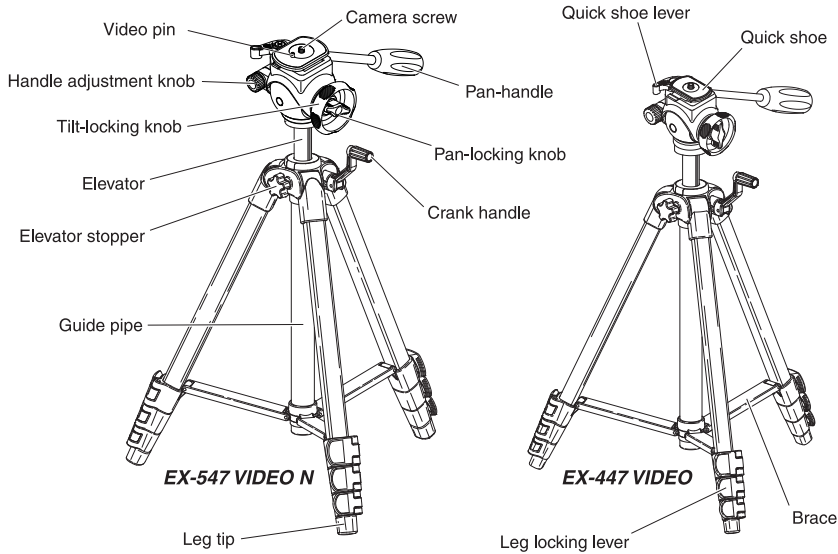


Identification of main parts

Thank you very much for choosing Velbon Tripod.
Please carefully read this manual before starting use so that you can handle this product correctly.



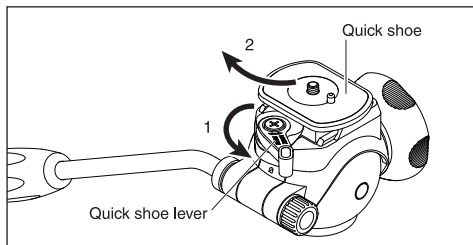
※ The manufacturer reserves the right to change specification, design, and size without prior notice.

SPECIFICATIONS

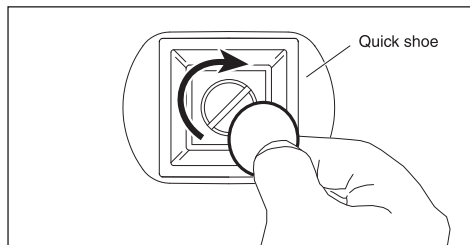
	EX-547 VIDEO N
Full extension (incl. elevator)	1600mm (62.99in.)
Extension without elevator	1328mm (52.28in.)
Elevator movement	272mm (10.71in.)
Folded length	517mm (20.35in.)
Leg diameters	23/20/17/14mm (0.91/0.79/0.67/0.55in.)
Number section	4
Weight	1596g (3.52lbs.)
Suggested loading weight	2000g (4.41lbs.)
Quick shoe	QB-46

	EX-447 VIDEO
Full extension (incl. elevator)	1550mm (61.02in.)
Extension without elevator	1285mm (50.59in.)
Elevator movement	265mm (10.43in.)
Folded length	485mm (19.09in.)
Leg diameters	20/17/14/11mm (0.79/0.67/0.55/0.43in.)
Number section	4
Weight	1155g (2.55lbs.)
Suggested loading weight	1000g (2.20lbs)
Quick shoe	QB-32

How to attach your camera

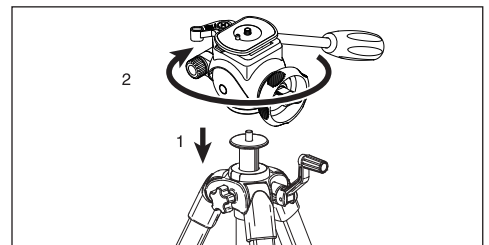


Turn the Quick shoe lever(1) until you feel a click releasing the standby pin and then remove the Quick shoe(2).



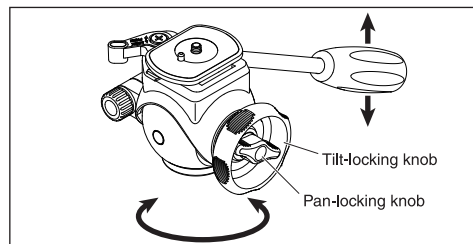
Align the Quick shoe to the bottom of your camera's tripod socket and then, tighten the screw clockwise by a coin until secure. The spring-loaded Video pin should be aligned with in the second hole in the Video camcorder base. The Video pin is retractable, so it also allows attachment of a camera having just one screw socket without problem.

How to attach to a tripod



The bottom screw socket of the Fluid head FHD-53D/FHD-43M is aligned with the tripod screw and should be tightened by rotating clockwise. Please ensure that the Head is fixed firmly onto the tripod before attaching your camera or other equipment.

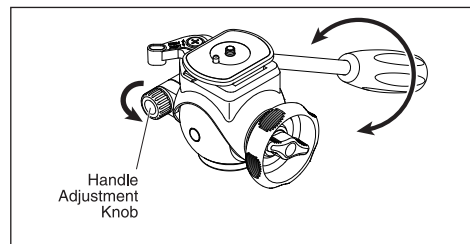
How to use this Fluid head



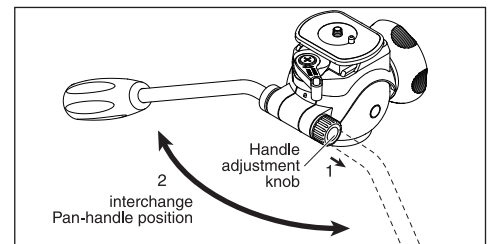
Loosening Pan-locking knob by turning it anti-clockwise enables fluid head to rotate from side to side.
Loosening Tilt-locking knob by turning it anti-clockwise enables position of the camera to go up and down.
Determine framing and tighten all the locking knobs.

- Do not force the Pan-handle while the Pan/Tilt-locking knob is locked or it may cause functional problems
- Do not over-loosen the Tilt-locking knob or it may cause the Pan-locking knob inside to become jammed.

How to change angle of the Pan-handle

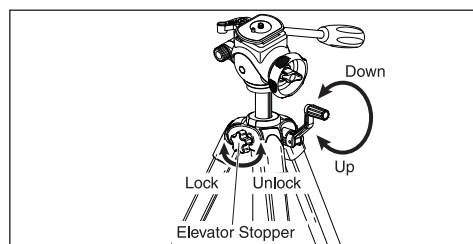


Loosen the Handle adjustment knob, the angle of the Pan-handle can then be changed.
Select the desired angle of the Pan-handle and set it with the Handle adjustment knob.



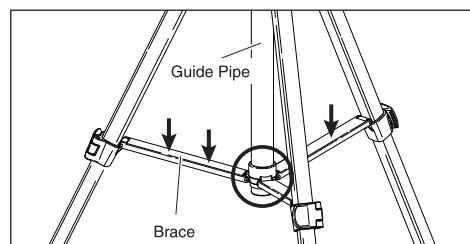
If you totally unscrew the Handle adjustment knob(1), the Pan-handle can be pulled out and inserted from the opposite direction(2).
When inserted in the desired position, please fix tightly with the Handle adjustment knob.

How to use Elevator

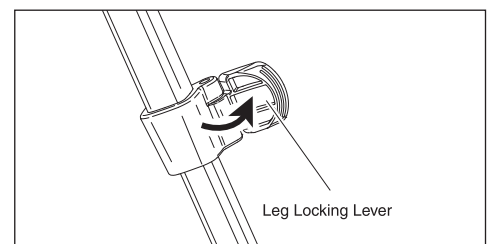


Unlock Elevator stopper, rotate Crank handle clockwise for up and rotate it anti-clockwise for down.
Obtain your desired height and lock Elevator stopper.

Caution for opening and spreading legs



When opening legs, pull down Brace till the end of Guide pipe.



To adjust leg extension, open Leg locking lever and extend leg to the desired position and lock it.
Use upper leg sections as much as possible for better stability.

⚠ Insufficient opening legs may cause tumble or instability.

⚠ When locking levers, watch fingers in order to avoid pinching fingers.